



FLP

Flexible Lining Products

Pond Liners

Coir Products

Groundcover



TERRAM
DIRECT
Geosynthetics you can trust

Terram
BodPave®
GrassProtecta®

Flexible Lining Products

Welcome to our latest brochure covering Green-tech's most recent acquisition, Flexible Lining Products (FLP). Founded over 15 years ago, FLP is one of the largest online retailers of pond liners and geotextiles in the industry.

The latest acquisition is a perfect fit for the Green-tech team, offering complementary products to its already extensive landscaping portfolio. The product range includes pond and lake lining products, geotextiles and geomembranes, erosion control aids and ground reinforcement products.

If you have a specific landscape requirement that you would like to discuss further please do not hesitate to contact a member of our team:

T: 01594 829297 / 01423 332136

E: info@flexibleliningproducts.co.uk

www.flexiblelining.co.uk

www.terramdirect.co.uk

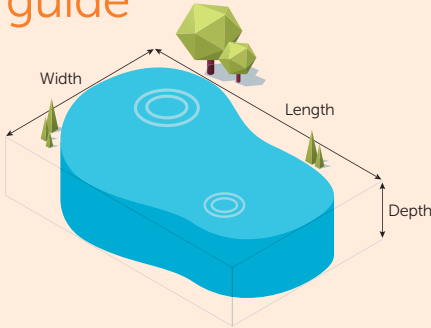


Contents

Pond Liners	4	Ground Reinforcement	12
Measuring Your Pond, A Simple Guide	4	BodPave® 85	12
Pond Liner Underlay	4	BodPave® 40	13
EPDM Synthetic Rubber Pond Liners	5	TruckPave®	14
Box Welded Pond Liners	5	TurfProtecta®	15
Butyl Pond Liners	6	GrassProtecta®	16
PVC Pond Liners	6	Geocell Erosion Control	17
Natural Swimming Pool	7	Geocell Tree Root Protection	18
Algae Control	8	Geotextiles	19
John Chambers Heritage Wetland Areas Wildflower Mix	9	Terram Rootguard	19
Coir Products	10	Terram 1000	20
Coir Log Rolls	10	Terram Hi Vis	20
Coir Pallets	10	Terram Weedguard	21
Ground Control	11	Toptex Protection Fabric	21
gt Ecomatt Rolls	11	gt Rootbarrier®	22
gt Groundcover	11	CuTex	23

Terms and Conditions: Prices in these subsections are correct at the time of going to press and all prices quoted are in UK sterling. All prices are subject to VAT at the rate ruling and should be treated as a guide only. A full detailed list of our terms and conditions and specifications at any time without prior notice. A copy of our current terms and conditions can be requested at any time. All orders over £2500 must be confirmed in writing. Carriage charge applies for order under £300 in value.

Measuring your pond, a simple guide



To work out the dimensions of your pond liner follow the calculation below:

Measure the pond length, width and depth at their widest point.

$$\text{Length} + (2 \times \text{Depth}) + 1\text{m} = \text{Total Length}$$

$$\text{Width} + (2 \times \text{Depth}) + 1\text{m} = \text{Total Width}$$

$$\text{Total Length} \times \text{Total Width} = \text{Size of Liner}$$

Example: A pond is 10m long by 6m wide and has a depth of 2m.

$$\text{Liner Length: } 10 + (2 \times 2) + 1 = 15\text{m}$$

$$\text{Liner Width: } 6 + (2 \times 2) + 1 = 11\text{m}$$

$$\text{Size of liner required} = 15 \times 11\text{m} (165\text{m}^2)$$

Pond Liner Underlay TS60 Heavy Duty



HD Pond Liner Underlay

provides exceptional protection from the ground for your pond or lake liner. The underlay is manufactured from a non-woven geotextile that offers exceptional puncture resistance from sharp stones and invasive debris. Pond Liner underlay is recommended for use with all our liners as it reduces stretching of the liner during settlement and protects the pond liner for its life expectancy.

For more information on the suitability of Pond Liner Underlay please contact your Technical Sales Advisor.

Type	Price/m ²
TS60 Heavy Duty	£1.30



For further information on underlay installation, visit www.flexiblelining.co.uk

EPDM Synthetic Rubber Pond Liners



EPDM is a synthetic rubber membrane ideal for lining ponds, lakes, lagoons and streams. Ideal for aquatic installations EPDM is a popular choice for larger projects where unusual shapes, contours and sizes are required. A highly robust pond liner, EPDM is resistant to UV degradation and other harsh environmental conditions. The EPDM pond liners can be installed all year-round as they remain extremely flexible at various temperatures.

We offer bespoke sizes of EPDM Pond Liners, please contact your Technical Sales Advisor for more details.

Type	Thickness	Price/sq foot
Firestone	1mm	POA

Type	Thickness	Price/m ²
Greenseal	0.75mm	£4.65
	0.85mm	£5.30
	1.00mm	£5.75

Box Welded Pond Liners



Box Welded Pond Liners are tailor-made to fit vertical sided and formal shaped ponds (standard, rectangle, circle, irregular or box shaped). Ideal for ponds which require planting shelves, uneven depths or sloping bases which can be fabricated to meet your individual requirements before arrival on site. A welded liner offers a perfect fit with no unsightly overlaps or creases and is made exactly to the specified dimensions vastly reducing the risk of on-site installation errors.

We offer bespoke sizes of Box Weld Pond Liners, please contact your Technical Sales Advisor for more details.

Type	Price
Box Welded Pond Liners	POA

For more information or advice on pond liners, contact the team on **01594 829297**

Butyl Pond Liners



Butyl rubber pond liners offer exceptional physical properties including flexibility with the ability to accommodate any variation in ground contours or movements. It offers high puncture resistance, a water-tight membrane and is UV stable being able to withstand long-periods of exposure to the sun. A popular choice with landscapers and garden designers to line large ponds, lakes and natural swimming pools.

Standard thicknesses of Butyl Pond Liners are listed below; however, we can offer bespoke sizes made to fit individual requirements.

Thickness	Price/m ²
0.75mm	£6.05
1.00mm	£7.40

PVC Pond Liners



An economical, yet highly flexible and robust pond liner suitable for small to medium ornamental ponds. Our range of PVC pond liners offer high puncture resistance and are particularly pliable making it simple to disguise creases or overlaps in the pond base and edges. All pond liners up to 60m² carry a lifetime guarantee, with larger ponds and bespoke sizes offering a 20 year guarantee.

Standard sizes of PVC pond liners are listed below, however we do offer bespoke sizes speak to a Technical Sales Advisor for more details.

Sizes	Price/m ²
Widths: 2m up to 10m Lengths: 5m up to 25m	£2.20

For more details contact your Technical Sales Advisor on **01594 829297** or email our team at **info@flexibleliningproducts.co.uk**

Natural Swimming Pools

Natural swimming pools are natural systems where no chemicals are required to disinfect the water, instead they use plants and biofilters to keep the water clean. Biofilters are designed to purify water using good bacteria and micro organisms however aquatic plants can also act as a biofilter. The water then goes through a secondary filter to remove sediments or bad bacteria before being filtered back into the main swimming pool.



Ask your Technical Sales Advisor for more details. Call 01594 829297.

www.flexiblelining.co.uk www.terramdirect.co.uk

Algae Control

ProCrystal

An environmentally friendly bio-product containing a bacterium to control swimming, floating algae and algal bloom found in ponds and lakes. The natural bacteria do not disturb the balance of the aquatic environment so are not harmful to fish or wildlife at the water's edge.

Supplied in 454g water soluble single use sachets for easy and mess free application.

Used correctly ProCrystal improves water clarity as well as reducing unpleasant odours that are often caused by the algae. Continued maintenance applications every 30 – 60 days (more frequently in warmer weather) helps stop an algae infestation returning.



Pack Size	Coverage	Price
4.086kg	Various	POA

Application

Depth	Application	Frequency	Dose/100m ²
< 1m	Initial application*	Every 30 days	300g
	Maintenance application**	Every 30 – 60 days	120g
>1m	Initial application*	Every 30 days	500g
	Maintenance application**	Every 30 – 60 days	200g

* Continue applications until desired results are achieved.

** Continue applications to maintain desired appearance of water system throughout the growing season.

When to apply

Jan	Feb	Mar	Apr	May	Jun	Jul	Aug	Sep	Oct	Nov	Dec
			← Recommended period of use →								



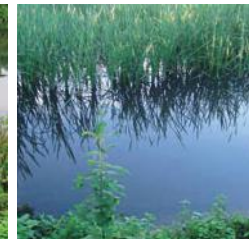
Before application



After 0 days



After 5 days



After 14 days

John Chambers Pond Edge Wildflower Mix



Sowing Rate

100% Wildflower Mixes: 2g/m²

80% Grass Seed / 20% Wildflower Seed Mixes: 5g/m²

Usage

Saturated soils, banks of ponds, streams and ditches.

Mix Contents		100% Wildflower Seed	80% Grass Seed/ 20% Wildflower Seed Mix
24.50%	Iris; Yellow	£239.00/kg	£60.00/kg
9.50%	Buttercup; Meadow		
8.00%	Vetch; Tufted		
7.50%	Campion; Red		
7.00%	Meadowsweet		
7.00%	Selfheal		
6.00%	Bedstraw; Hedge		
5.00%	Angelica; Wild		
3.50%	Bird's-foot-trefoil; Greater		
3.50%	Sneezewort		
3.00%	Avens; Water		
3.00%	Scabious; Devil's-bit		
3.00%	Gipsywort		
2.50%	Fleabane; Common		
2.00%	Hemp-Agrimony		
2.00%	Purple; Loosestrife		
1.50%	Ragged-Robin		
1.50%	St John's-wort; Square-stalked		

Coir Log Rolls



Coir log rolls can be used as living restoration walls that provide erosion control and rapid vegetation establishment. They're effective for forming marginal vegetation around edges of lakes, streams and river banks and are cost-effective revetments which are suitable alternatives to hard landscaping solutions.

Size	Price
300mm x 3m	POA

Other sizes available on request.

Coir log rolls can be supplied pre-planted or unplanted

Coir Pallets



Coir pallets are used to create wetland areas for establishing plant growth on large exposed areas of banks and islands. Coir pallets are a 3mm virgin coir rope in a 50mm sq mesh opening, filled with virgin coir fibre. It's grown outdoors during growing season until the roots are well established.

Typical plant species include: Carex acutiformis (Lesser Pond Sedge), Juncus effuses (Soft Rush), Lythrum salicaria (Purple Loosestrife), Iris pseudacorus (Yellow Flag Iris) and Phalaris arundinacea (Reed Canary Grass).

Size	Price
1 x 1m	POA

Other sizes available on request.

gt Ecomatt Rolls



Manufactured in the UK from 100% recycled materials. The product is needle punched onto a degradable polythene backing, to allow both air and water to pass through the layers.

gt Ecomatt benefits:

- Helps to suppress competing weed growth within the vicinity of the plants root development area.
- Allows water and air to percolate through the wool layer and helps to retain moisture in time of drought.
- The matting/roll acts as an insulator and absorbs heat from the sun thus creating an assisted environment for the plant to establish itself.
- Totally degradable, lasting a minimum of two seasons.

Weight/m ²	Roll Size	Unit Price
450g	1m x 30m	£59.85
450g	2m x 30m	£115.50
750g	1m x 30m	£82.95
750g	2m x 30m	£161.05

*For gradients up to 35° use 450g gt Ecomatt, in instances up to 45-50° we recommend the 750g product. A site survey should be undertaken prior to installation to consider specific site circumstances such as wind speed, nature and current erosion.
 **Please note that the colour and appearance of gt Ecomatt may vary slightly due to the nature of the recycled materials used.

gt Groundcover



gt Groundcover offers weed suppression without the need for spraying. Black woven polypropylene, 100g/m².

Roll Size	Unit Price
1.m x 50m	£25.50
1m x 100m	£49.50
2m x 50m	£49.50
2m x 100m	£98.00
3.3m x 50m	£78.00
3.3m x 100m	£150.00
4m x100m	£195.00

Pegs and Pins

Product	Units	1+	5+	10+
160mm Black Peg	2000 /box	£98	£90	£85
Steel 'J' pins – 20cm x 4mm Ø	500 /pk	£49	£46	£44
Degradable Square-Peg® BIO, 160mm, Flat Top, 10 Barbs	2000 /box	£160	£150	£140

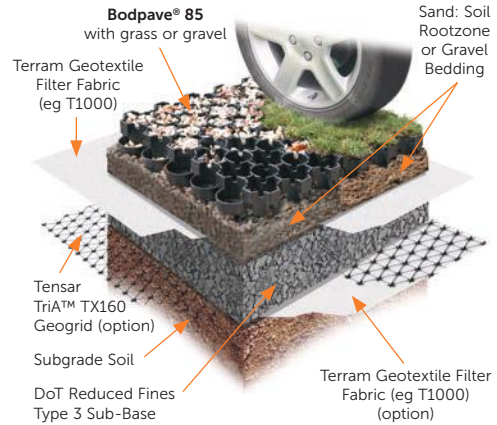


BodPave® 85



Bodpave® 85 porous pavers can be installed with either a grass or gravel filled surface. Bodpave® 85 pavers/grids are strong interlocking 100% recycled cellular porous plastic paving grid systems for grass reinforcement, ground stabilisation and gravel retention for regular trafficked surfaces (pedestrian and vehicles)



BodPave® 85 permeable pavers are manufactured in the UK from UV Stabilised 100% recycled HDPE and are very strong, chemically inert and non-toxic. Bodpave® 85 porous paving provides a durable, safe and environmentally friendly surface for trafficked areas with a very low carbon footprint. BodPave® 85 is a cost effective solution to worn and rutted grassed areas, displaced gravel and for source control of surface water run-off. Bodpave® 85 offers a load bearing capacity of up to 400t/m² and will cope with static axle loads up to 60kN.



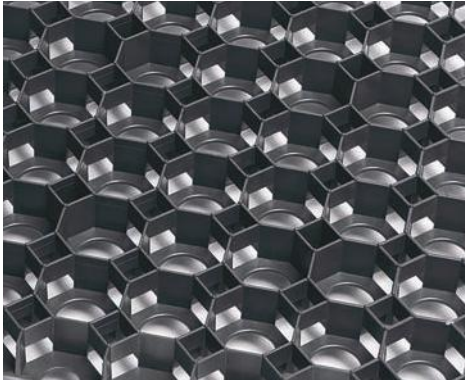
BodPave® 85 Parking Markers



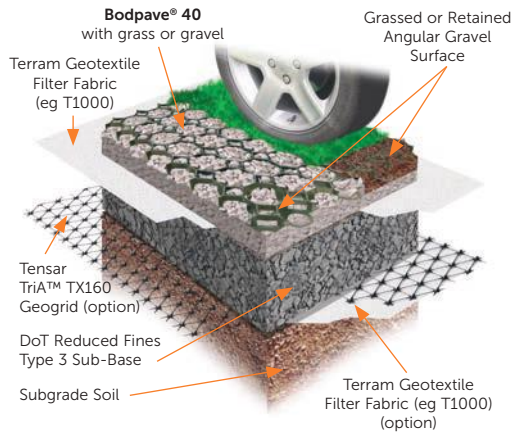
Product	Size
BodPave® 85 Parking Markers	215 x 70mm

Size (W x L x D)	Colours	Price/m ²
500 x 500 x 50mm	 	POA

BodPave® 40



BodPave® 40 porous pavers are a cost-effective ground reinforcement solution for displaced gravel, worn and rutted grass areas for water to run off. Bodpave® 40 paving grids are designed to be installed onto a well prepared, free-draining and relatively even surface. The ground reinforcement paving grids simply connect together and can be filled with either sand, gravel or topsoil and seeded for use as grass pavers which provides a visually pleasant and stable surface structure through which grass can be grown, or filled with an angular gravel for use as a gravel retention reinforcement surface.



Size (W x L x D)	Colours	Price/m ²
500 x 500 x 40mm	 	POA

BodPave® 40 Parking Markers



Product	Diameter
BodPave® 40 Parking Markers	70mm

For more information on Bodpave quantities and pricing, please contact your Technical Sales Advisor


TruckPave® 80

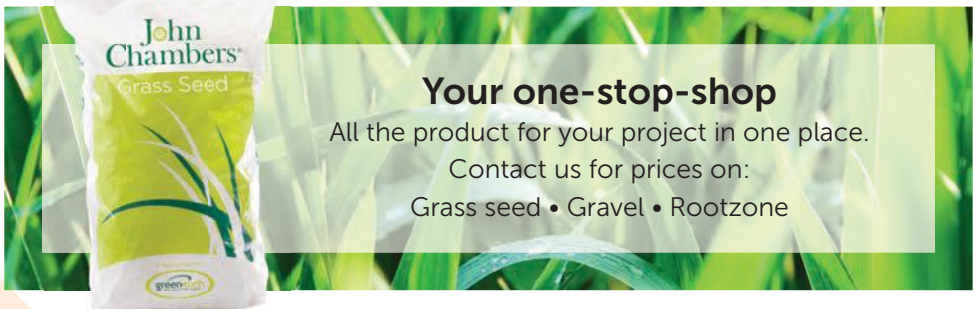


Manufactured from recycled plastics, TruckPave® cellular paving is robust, durable and capable of withstanding all levels of traffic up to and including coaches and HGVs. TruckPave®'s cells can be filled with either grass seed/ topsoil or gravel, making them suitable for stabilising areas where a grass or stone surface is desirable. TruckPave® pavers are the economic, environmentally-friendly and a lightweight alternative to concrete grass pavers.

Applications:

- Lorry, coach and car parks
- Emergency fire access roads
- HGV service access roads
- Road widening
- Grass verges, including where HGV overrun occurs
- Footpaths
- Service yards and other areas where forklift trucks operate
- Hardstanding for cranes and site equipment
- Lay-bys
- Loading areas

Size (W x L x D)	Colour	Price/m ²
600 x 400 x 80mm		POA



John Chambers
Grass Seed

Your one-stop-shop
All the product for your project in one place.
Contact us for prices on:
Grass seed • Gravel • Rootzone

TurfProtecta®



TurfProtecta® grass reinforcement mesh is an extruded black or green, lightweight plastic



mesh for grass reinforcement and protection where occasional light vehicle or pedestrian use is required for applications including car parking, access routes and aircraft taxiways. Supplied in 2m x 30m rolls and in two grades, 'Standard' and 'Heavy' as determined by the application, TurfProtecta® reinforcement mesh is ideal for reinforcing grassed surfaces prone to wear, rutting and smearing which can result in a muddy surface incapable of being used.

Applications:

- Infrequent overflow grassed car parks
- Grass access routes
- Grassed areas for pedestrians
- Grassed footpaths
- Disabled access pathways
- Front lawn parking

Manufactured from 100% recycled high density polyethylene, the mesh is UV stabilised and simple to install; after cutting the grass short, the TurfProtecta® reinforcement mesh is unrolled and pinned to the surface using metal U-pins or plastic pegs.

By allowing plants to grow through the plastic mesh apertures, the grass sward intertwines with the plastic mesh filaments creating a strong, discreetly reinforced surface, limiting damage and reducing soil compaction. It is advisable to allow the grass to fully establish before the area is used to create a stronger reinforced surface.

Standard

Size	Mesh Aperture	Weight	Col.	Price/roll
2m x 30m	25 x 29mm	550gsm	● ●	£128.50

Heavy Duty

Size	Mesh Aperture	Weight	Col.	Price/roll
2m x 30m	22 x 27mm	660gsm	● ●	£146.90

Fixing Pins

U-Pins or Fixing Pins are widely used in a variety of applications including TurfProtecta,



GrassProtecta, Weedguard Weed Control Fabric, Fence Base Pegs, Electric Fencing, Geotextile Overlap Joins, Ground Stabilisation Mats plus many more.

170mm x 6mm Steel Pins

Installation guidelines
available on our website at
www.flexiblelining.co.uk

GrassProtecta®



GrassProtecta® grass reinforcement mesh is a heavy duty thick slip resistant polyethylene plastic mesh grid for reinforcing and protecting grassed surfaces prone to wear, rutting and smearing which can result in a muddy surface incapable of withstanding vehicular or pedestrian traffic applications. GrassProtecta® grass reinforcement mesh has been developed with an oscillated mesh structure which is designed to increase traction and improve slip resistance by up to 97% compared to standard straight oriented meshes.

Applications:

- Grass car parks and overflow car parks
- Pedestrian paths
- Disabled access routes
- Light aircraft taxiways
- Grass verges
- Caravan park access and caravan bays
- Front lawn parking
- Golf buggy paths

GrassProtecta® Lite

A 10mm mesh suitable for withstanding the pressures of occasional car parking and heavy pedestrian traffic. A typical use might be on a golf course fairway path or car parking area that is not in regular use.

Size	Thick-ness	Wgt/ m ²	Col.	Price/ roll
1 x 10m	10mm	0.95kg		£41.90
2 x 10m				£84.20
2 x 20m				£152.25

GrassProtecta® Medium

A 13mm thick mesh that is suitable for overspill parking and cycle paths with occasional maintenance vehicle access and regular residential lawn.

Size	Thick-ness	Wgt/ m ²	Col.	Price/ roll
1 x 10m	13mm	1.6kg		£55.90
2 x 10m				£113.95
2 x 20m				£221.50

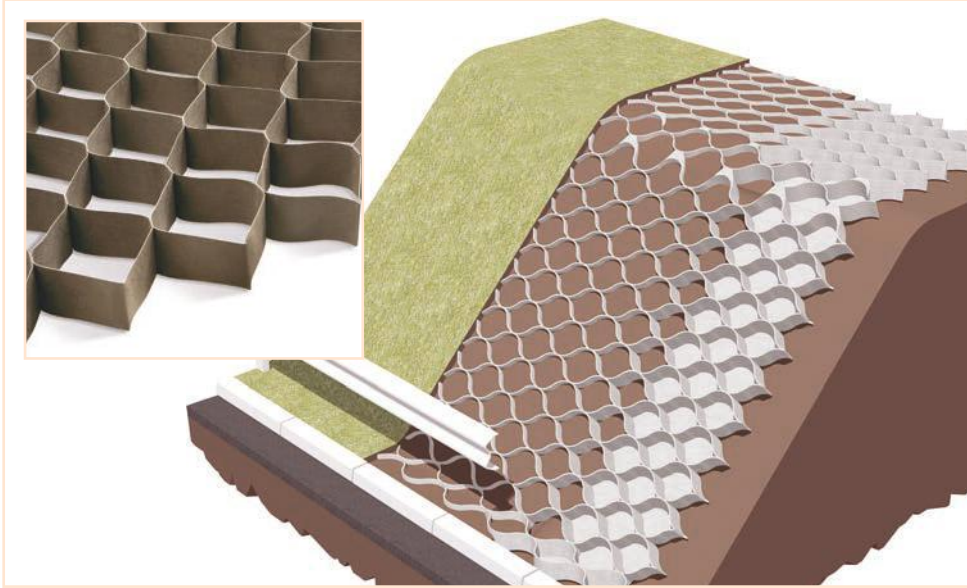
GrassProtecta® Heavy Duty

Offers additional strength through a 14.5mm mesh. This product is suitable for grass access roads, consecutive day use grass car parks with regular vehicle access, event parking spaces or occasional industrial vehicle parking. GrassProtecta® Heavy Duty is also in demand for caravan sites and areas where a more heavy-duty product is required.

Size	Thick-ness	Wgt/ m ²	Col.	Price/ roll
1 x 10m	14.5mm	2.0kg		£87.40
2 x 10m				£196.80
2 x 20m				£332.00

Geocell

Erosion Control



Geocell Grade	Cell Ø (mm)	Topsoil Infill Depth (mm)	Maximum Slope Gradient				Panel Size (m)	Fixing Pin/Pegs for Single Panel		
			V	H	%	Angle		1m x 1m grid	Perimeter (every cell)	Total
35/10	350	100	1	2	50	26°	7 x 5	24	64	88
25/10	250	100	1	1.5	67	33°	7 x 5	24	64	88
35/15	350	150	1	1.5	67	33°	7 x 5	24	90	118
25/15	250	150	1	1	100	45°	7 x 5	24	90	114
22/20	220	200	1	1	100	45°	6 x 3	18	52	70

Using Geocell to control erosion ensures better resistance to the erosive effects of wind and water run-off. As Geocell is made from permeable geotextile, it allows water to flow freely between cells encouraging drainage and vegetation.

Applications:

- Cut or fill embankments
- Dams or spillways
- Abutment protection
- Revetments
- Geomembrane protection
- Landfill lining
- Soil-nailing cover

Geocell Steel Fixing Pins

Long Metal U-Shaped Fixing Pins are used to secure the opened up Geocell Tree Root Protection/Ground Stabilisation panels to the ground.

550mm long x 8mm Ø steel



Geocell

Tree Root Protection



Using Geocell for tree root protection ensures the roots beneath are protected from vehicle loads by confining the sub-base and stabilising the ground.

When permeable Geocell is filled with a porous, no fines, free-flowing aggregate the system allows essential passage of air and water providing essential nutrients to the roots. Geocell is ideal for 'no-dig' situations.

Applications:

- Permanent woodland trails
- Paths and cycleways
- Driveways
- Roads
- Access routes
- Parking areas

Type	Panel Size	Cell Ø x Depth	Panel Wgt	Typical Loading
25/10	5 x 7m	250 x 100mm	17kg	Pedestrian Cycle
25/15	5 x 7m	250 x 150mm	25kg	Light Vehicles
22/20	6 x 3m	220 x 200mm	20kg	Heavy Vehicles

For more information and advice please contact your technical sales advisor on **01594 829297** or email info@flexibleliningproducts.co.uk

Terram Rootguard

Terram Rootguard and Rootguard Plus are used to protect buildings, walls, paths, drainage pipes cables and lawns from potential damage caused by root development. Structures with shallow foundations can be undermined by tree roots growing close to the surface. Both are chemically inert to natural soil conditions and resistant to biodegradation.

Terram Rootguard – permeable solution



Manufactured from polypropylene/polypropylene fibres, Terram Rootguard provides excellent resistance to root development while still allowing water to permeate making it an ideal solution for areas surrounding land drains.

High tensile strength and puncture resistance give Terram Rootguard the capability to withstand the differential forces that can develop in clay soils.

Terram Rootguard Plus – impermeable solution



Terram Rootguard Plus is a composite of Terram Rootguard and an HDPE membrane which gives the strength to withstand penetration from even the most vigorous of tree roots. Idea for areas where there is no requirement for water to pass through the barrier.

			Terram Rootguard	Terram Rootguard Plus
Composition			Non-woven geotextile	Non-woven geotextile extrusion coated with high density polythylene
Mechanical properties (mean values)				
Tensile strength	EN ISO 10319	kN/m	18.0	14.0
Elongation	EN ISO 10319	%	30	25
CBR puncture resistance	EN ISO 12236	N	3250	2550
Physical properties (typical values)				
Mass per unit area	En ISO 9864	g/m ²	260	275
Roll dimensions				
Roll width		m	2.25	2.00
Roll length		m	25	25
Price			£105/roll	£145/roll

Terram T1000



Robust and durable, Terram geotextile helps prevent the intermixing of solid particles between the layers of soil, yet still permits water to permeate. The tensile strength, high stiffness and permeability of Terram geotextiles make them ideal for material separation purposes within pavements.

Applications:

- Terram makes it easier to spread granular material over soft areas
- Minimises the need for excavation and replacement of the original ground
- Terram reduces the loss of granular material into the subgrade
- Allows work to continue during bad weather
- Allows more open gradings to be used for sub-base materials
- Terram allows initial fill layers to be placed over particularly soft ground without construction vehicles becoming stuck

Type	Size	App.	Price
Mini/ Builder Pack	4.5 x 11.1m	Dom.	£34.50
Roll	2.25 x 100m	Comm.	£140.00
Roll	4.5 x 100m	Comm.	£240.00

Terram Hi Vis



Terram Hi-Vis is a non-woven orange geotextile used for separating contaminated/ uncontaminated soils. This geotextile has a dual effect: its vivid colour warns of potential danger at the point of any future excavations and it can also prevent the upward movement of contaminated soil particles.

- Is a highly-visible separator
- Prevents intermixing of adjacent mineral layer
- Is quick and easy to install

Size	Price
4.5 x 100m	£330.00

Other grades of Terram Geotextiles are available on request. Visit our website for more information at www.flexiblelining.co.uk

Terram WeedGuard Weed Control Fabric

Toptex Protection Fabric



Terram WeedGuard is proven for suppressing weeds in landscaping and garden applications without the need for chemicals. Designed to allow the passage of water, oxygen and nutrients while blocking weeds. Terram WeedGuard is installed between soil and a decorative layer such as bark chippings, stone chippings, pebbles or gravel.

- Ideal for garden beds, landscaping and beneath decked areas
- Lightweight and simple to install
- Maintenance free
- Resistant to chemical and microbiological breakdown

Roll Size	Price
2.25 x 50m	£65/roll

For advice and installation tips please contact us at info@flexibleliningproducts.co.uk



Non-woven, decay resistant fabric produced with 100% UV-stabilised propylene. Unlike impermeable tarpaulins which can lead to covered material rotting over time, Toptex is not only a breathable material but also keeps the rain out thus making ideal storage conditions for log and woodchip storage.

Benefits

- Water shedding (drains off rain water at slope angles > 45°)
- Permeable to air and vapour thus avoiding mold development)
- UV stable (minimum life time 3 years)
- Highly tear resistant

Applications

- Straw/Hay bale cover
- Fire wood/wood chip cover

Size	Colour	Weight	Price
4m x 50m	Green	200g/m ²	From £2.20/m ²

gt 260 Permeable



gt 260 Permeable is impermeable to roots but permeable to water. Ideal for positioning around a trees rootball where there is a possibility of flooding or slow water drainage. The permeable qualities of gt 260 Permeable means that water will drain freely through the root barrier without pooling around the rootball.

Available in 25m rolls.

Depth x Linear Metre	Thick-ness	Linear Metre Price		
		1+	200+	1000+
2.25m	0.65mm	£4.36	£4.20	£3.99

Joining Tape

gt RootBarrier® Butyl tape is a double-sided adhesive tape made from a woven polyethylene, with a coating of unvulcanised rubber on both sides. Butyl tape is used to join sections of gt RootBarrier® root protection screen. A three-point application of Butyl tape guarantees optimum root impermeability.



gt RootBarrier® Bamboo 420



gt RootBarrier® 420 UV is made from a stronger and heavier geotextile than gt RootBarrier® 325, it's sturdier but still flexible. Just like gt RootBarrier® 325, it is waterproof, resistant to bacteria and most chemicals and it's completely recyclable. In addition, this gt RootBarrier® product is more UV resistant so it can be left partially above the soil surface; this makes it easy to prune away the undesired runners that some plants produce. gt RootBarrier® 420 UV is the only gt RootBarrier® that also includes a 25 year warranty for preventing aggressive roots such as bamboo and reeds from growing through it!

Available in 50m rolls.

Suitable areas and uses

- Gardens, parks and playgrounds
- Lines and sewers
- Foundations, pipes and cables
- Roads, highway, pavement

Depth x Linear Metre	Linear Metre Price		
	1+	200+	1000+
0.7m	£4.83	£4.62	£4.52
1.0m	£6.80	£6.60	£6.40
2.25m	£9.66	£9.24	£9.03

CuTex



Ideal for the management of Japanese Knotweed and other tough to control species, CuTex is a permeable geocomposite membrane consisting of a thin copper sheet encapsulated between two high strength geotextiles. Cu²⁺ ions are safely released creating a localised zone of inhibition and thus inhibiting root growth.

Applications:

- Challenging environments such as construction and industrial redevelopment sites
- Highways
- Rail
- Domestic and private developments
- Remediation sites

Cut lengths available on request.

Roll Sizes
2.6m width x 25m length
2.6m width x 50m length
5.2m width x 25m length
5.2m width x 50m length

Also available...

- Complete Landscape Supply
- Grass Seed and Wildflower Seed
- Artificial Turf
- Landscape Edging
- Topsoils and Backfill Material
- Tree Planting Material
- Bark Mulch



www.flexiblelining.co.uk

FLP is one of the largest online retailers of pond liners and geotextiles in the industry. The product range covers the areas of pond and lake excavation products, geotextiles, geomembranes, erosion control aids and ground reinforcement products.

Twitter: @Flexible_lining

www.terramdirect.co.uk

Terram is the brand leading geotextile of the construction industry, the geotextile acts as a filter or separator whilst permitting the passage of water. Utilised extensively in highways and commercial building projects, the Terram brand has become synonymous with quality, practicality and reliability across the industry.

Flexible Lining Products (FLP) is the latest addition to the Green-tech portfolio of brands. The new range includes all your landscape ground preparation essentials from geotextiles and membranes to ground reinforcement products.

Contact your Technical Sales Advisor for more information, technical data or installation assistance with your landscape project.



Flexible Lining Products

Rabbit Hill Business Park
Great North Road
Arkendale
Knaresborough HG5 0FF

T: 01594 829297 / 01423 332136
E: info@flexibleliningproducts.co.uk
www.flexiblelining.co.uk
www.terramdirect.co.uk



Flexible Lining Products is a trading style of Green-tech Ltd

